



US15-2007-01 Swing Arm Kit, LH (shown)



US15-2007-02 Swing Arm Kit, RH



US15-2009-01 Fixed Guide Kit, LH (shown)



US15-2009-02 Fixed Guide Kit, RH



US15-2005-01 Pivot Guide Block Kit



US15-2010-03 Pivot Plate Kit, Standard, LH - **SHOWN**



US15-2010-04 Pivot Plate Kit, Standard, RH (~~shown~~)



US15-2010-01 Pivot Plate Kit, Telescopic, LH



US15-2010-02 Pivot Plate Kit, Telescopic, RH (shown)



US21-2008-00 Guide Track Cover. **** Cut to Length****



US15-2002-01 Breakout Cam Kit



US15-1656-01 Torsion Tube Kit



US15-2006-01 Transfer Bracket Kit



US09-0744-01 Screw, M4x8 (2 ea)





US15-1664-01 Speed Control Kit, 2-Panel



US15-1664-02 Speed Control Kit, Telescopic



US08-1664-E Pinion Gear Self Closure, Speed Control



US05-1665-01 Spring Assembly, 2-Panel, LH



US05-1665-02 Spring Assembly, 2-Panel, RH



US05-1665-03 Spring Assembly, Telescopic, 60", LH



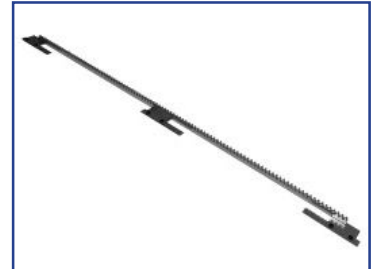
US05-1665-04 Spring Assembly, Telescopic, 60", RH



US05-1665-05 Spring Assembly, Telescopic, 49", LH



US05-1665-06 Spring Assembly, Telescopic, 49", RH



US05-1670-01 Gear Rack Assembly, 2-Panel



US05-1670-02 Gear Rack Assembly, Telescopic



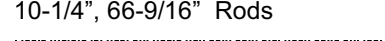
US05-0545-00 Anti-static Assembly, PSA



US15-2004-07 Flush Bolt Kit, Single Throw, 10-1/4" Rod



US15-2004-06 Flush Bolt Kit (Positive Latch), Double Throw, 10-1/4", 66-9/16" Rods



Remember - search for all parts online at www.besam-usa.com

© 2011 Besam US Inc.

2 Rev B



US15-2004-08 Pin Guide
Flush Bolt Kit



US15-2004-09 Extension Rod
Flush Bolt Kit



US24-2004-08 Flush Bolt
Warning Label



US08-1661-02 Pull, C-handle,
Optional Double



US15-1661-01 Pull, C-handle,
Standard Single



US15-1674-01 Flush Keeper
Kit



US08-1662-01 Conductive
Tape Copper Foil, Per Foot

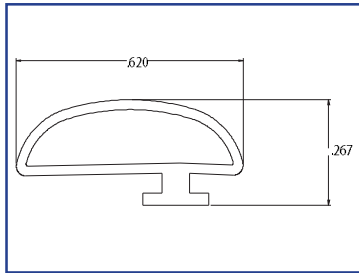


US08-1653-01 Glass Block
Neoprene, 85 Duro
Sold Individually

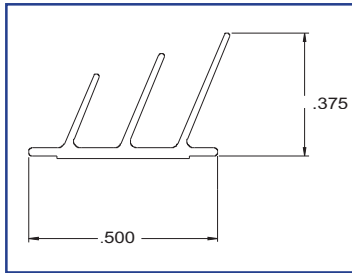


US15-0392-01 Kit, ICU SA P-
Panel Stile Bracket

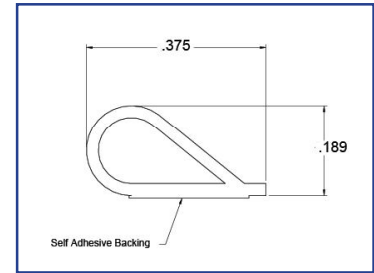




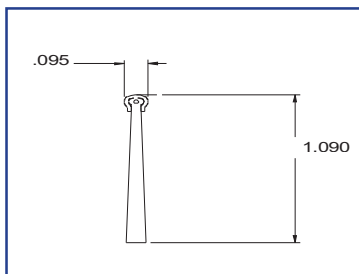
US20-1657-01 Smoke Seal,
Door Stile



US20-1658-01 Smoke Seal,
Header Track, Telescopic



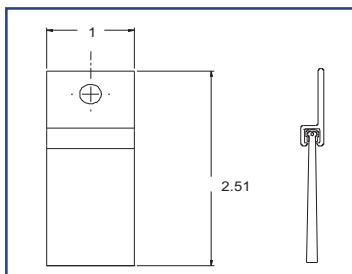
US08-0784-01 Smoke Seal,
PK33



US20-1627-02 Smoke Seal
Sweep, 48" Lengths



US01-0685-LLDB Brush Holder,
Concealed Sweep



US15-1654-01 Brush Assembly,
Anti-Static





US02-1699-05 CU Control



US02-1699-0107 Optex OA-
Presence T Sensor



US02-1699-03 Wave Switch,
Jamb Mount, Icon/WTO



US02-1699-04 Wave Switch,
Wall Mount, Icon/WTO



US02-1699-06 Jamb Box,
Surface Mounted



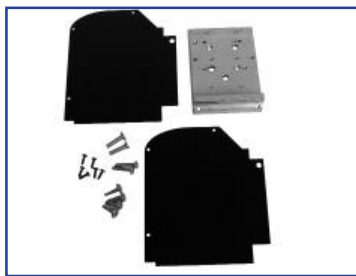
US04-1699-11 End Cap, TL SA,
CL



US04-1699-12 End Cap, TL SA,
DB (shown)



US15-1699-01 Auto Belt Bracket
Kit



US15-1699-02 Auto End Cap
Kit



US15-1706-01 Shutter Strike



VERSAMAX™ ICU TOUCHLESS

ASSA ABLOY, the global leader
in door opening solutions



US20-1699-01 Auto Cover Brush,
96"



US20-1699-02 Auto Telescopic
Cover Brush



US24-1699-02 Automatic Caution
Decal



US24-1699-07 Decal, VersaMax
Touchless, Cover 3-Position



VERSAMAX™ ICU SWING PACKAGE

ASSA ABLOY, the global leader
in door opening solutions



US08-1641-01 Overhead Door Stop, Rixson



US08-1643-01 Pemko Continuous Hinge, 95", CL



US08-1643-02 Pemko Continuous Hinge, 95", BK



US08-1644-01 Dead Latch Paddle, AR4781, RH



US08-1644-02 Dead Latch Paddle, AR4781, LH



US08-1642-01 Entry Trim, AR3081



US08-1661-02 Pull, C-handle, Optional Double



US08-1683-01 C-Handle w/45 Degree Bend, Optional Double Pull



US1601 Door Closer, Norton 1601, CL



US1601BK Door Closer, Norton 1601, BK



US1601H Door Closer, Hold Open, Norton 1601H, CL



US1601HBK Door Closer, Hold Open, Norton 1601H, BK

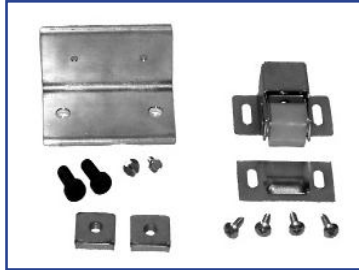


US15-2004-07 Flush Bolt Kit, Single Throw, 10-1/4" Rod



VERSAMAX™ ICU SWING PACKAGE

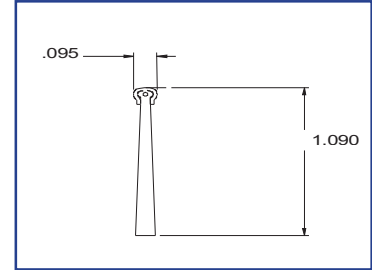
ASSA ABLOY, the global leader
in door opening solutions



55-15-055 Mounting Kit,
Nylatch, ICU (set of Two)



US08-1653-01 Glass Block
Neoprene, 85 Duro
Sold Individually



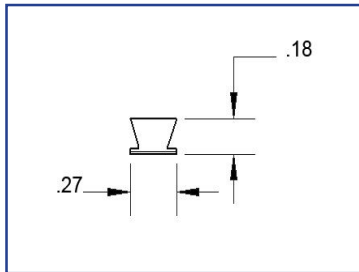
US20-1627-02 Smoke Seal
Sweep, 48" Lengths



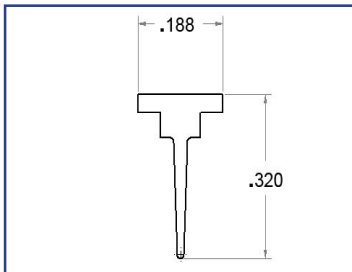
50-20-215 Sweep, Standard**



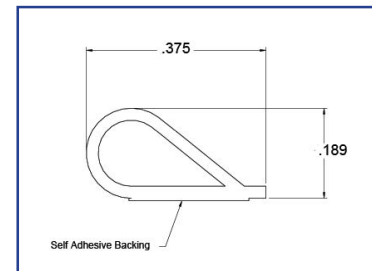
**Standard Unislide Concealed
Brush, 1" Black



85-20-012 Felt Pile, Self
Adhesive, 1/4" Back, BK



US20-1659-01 Silicone T-seal,
Smoke Seal, ICU



US08-0784-01 Smoke Seal,
PK33, 17 Ft Roll, Black



Remember - search for all parts online at www.besam-usa.com

© 2011 Besam US Inc.

VERSAMAX™ ICU SWING PACKAGE ANTI-MICROBIAL

ASSA ABLOY, the global leader
in door opening solutions



US08-1686-02 Pull, C-handle,
Optional Double,
w/Anti-Microbial Finish



US08-1687-01 C-Handle
w/45 Degree Bend, Optional
Double Pull, w/Anti-Microbial
Finish



US08-1688-01 Entry Trim,
AR3081, w/Anti-Microbial
Finish



US08-1689-01 Dead Latch
Paddle, AR4781, RH,
w/Anti-Microbial Finish



US08-1689-02 Dead Latch
Paddle, AR4781, LH,
w/Anti-Microbial Finish



ICU/CCU Smoke Seal Chart	
Part Number	Description
US15-0786-01	Smoke Seal Kit Single Slide Clear
US20-0784-01	Pemko Smoke Seal PK33 17' Roll
US08-0784-02	Pemko Smoke Seal PK55 17' Roll
US08-0785-01	Pemko Brush Seal 18041CNB Clear 60" Long
US15-0787-01	Smoke Seal Kit Single Slide Dark Bronze
US20-0784-01	Pemko Smoke Seal PK33 17' Roll
US08-0784-02	Pemko Smoke Seal PK55 17' Roll
US08-0785-02	Pemko Brush Seal 18041CNB Dark Bronze 60" Long
US15-0787-01	Smoke Seal Kit Bi-Part Clear
US20-0784-01	Pemko Smoke Seal PK33 17' Roll
US08-0784-02	Pemko Smoke Seal PK55 17' Roll
US08-0785-01	Pemko Brush Seal 18041CNB Clear 60" Long
US15-0788-02	Smoke Seal Kit 3-Panel Clear
US20-0784-01	Pemko Smoke Seal PK33 17' Roll
US08-0784-02	Pemko Smoke Seal PK55 17' Roll
US08-0785-01	Pemko Brush Seal 18041CNB Clear 60" Long
US15-0788-03	Smoke Seal Kit 6-Panel Clear
US20-0784-01	Pemko Smoke Seal PK33 17' Roll
US08-0784-02	Pemko Smoke Seal PK55 17' Roll
US08-0785-01	Pemko Brush Seal 18041CNB Clear 60" Long
US15-0789-01	Smoke Seal Kit Bi-Part Dark Bronze
US20-0784-01	Pemko Smoke Seal PK33 17' Roll
US08-0784-02	Pemko Smoke Seal PK55 17' Roll
US08-0785-02	Pemko Brush Seal 18041CNB Dark Bronze 60" Long
US15-0789-02	Smoke Seal Kit 3-Panel Dark Bronze
US20-0784-01	Pemko Smoke Seal PK33 17' Roll
US08-0784-02	Pemko Smoke Seal PK55 17' Roll
US08-0785-02	Pemko Brush Seal 18041CNB Dark Bronze 60" Long
US15-0789-03	Smoke Seal Kit 6-Panel Dark Bronze
US20-0784-01	Pemko Smoke Seal PK33 17' Roll
US08-0784-02	Pemko Smoke Seal PK55 17' Roll
US08-0785-02	Pemko Brush Seal 18041CNB Dark Bronze 60" Long



US15-0569-02 Pivot Base,
Trackless, RH



US15-0569-01 Pivot Base,
Trackless, LH (Shown)



US21-0277-01 Washer, Nylon,
Concealed Pivot



US05-0568-02 Door Foot,
Trackless, RH (shown)



US05-0568-01 Door Foot,
Trackless, LH



US21-0513-01 Wheel, Roller, DHD



US09-0957-01 Shoulder Bolt, DHD



US21-2011-01 Door Block,
Trackless, RH



US21-2011-02 Door Block,
Trackless, LH (Shown)



US15-2011-01 Mounting
Hardware Kit



50-15-146 Roller Guide Kit, (2 ea)



50-08-8805 Roller Guide, (1 ea)



50-09-146 Split Washer, (1 ea)





US05-0692-03 Foot Assembly,
Trackless, RH



US05-0692-04 Foot Assembly,
Trackless, LH (shown)



*** Used on prior trackless version,
with metal Door Block with square
side cut out***



50-15-137 Bottom Roller
Assembly, Active Leaf



US20-0485-01 Door Stop
Bumper



US05-0553-01 Dampener
Assembly, LH



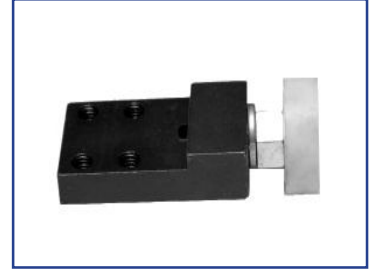
US05-0553-02 Dampener
Assembly, RH



US15-0601-01 Cover Latch Arm



US15-0604-02 Anti-Riser Kit



US15-0563-01 Roller Mounting
Bracket Assembly



US05-0600-01 Door Stop, LH



US05-0600-02 Door Stop, RH



US05-0552-01 FSL Connecting
Post



Remember - search for all parts online at www.besam-usa.com

© 2011 Besam US Inc.



50-05-018 Pull Handle, 7", CL



50-05-047 Pull Handle, 7", BK



US21-0486-01 Flush Pull
(Plastic)



US15-0367-01 Positive
Latching Kit, CL (Shown)



US15-0367-02 Positive
Latching Kit, BK



US05-0367-01 Positive Latch
Set, AR4570, CL



US05-0367-02 Positive Latch
Set, AR4570, BK



US05-0367-04 Positive
Latching Deadbolt



US03-0367-02 Mounting Bracket



US08-0661-01 Lock Strike,
Positive Latch



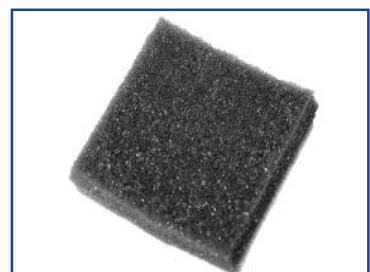
US21-0327-01 End Cap, Door
Carrier



US03-0564-01 End Cap, RH

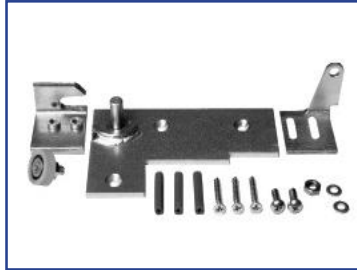


US03-0564-02 End Cap, LH
(shown)



US20-0327-01 Cushion, End
Cap





12-15-104 Pivot and Guide, A/L, RH, Kit (Shown)



12-15-105 Pivot and Guide, A/L, LH, Kit



12-03-010 Trackless Breakout Bracket, RH



12-03-009 Trackless Breakout Bracket, LH



12-03-011 Roller Angle Brackets, LH



12-03-012 Roller Angle Brackets, RH



50-08-8805 Roller



50-09-146 Washer



12-15-115 Top Carriage Wheel Assembly, LH (Shown)



12-15-116 Top Carriage Wheel Assembly, RH



12-03-013 Eccentric for Roller



12-08-005 Roller Wheel, Steel



19-04-004 Cover Lock



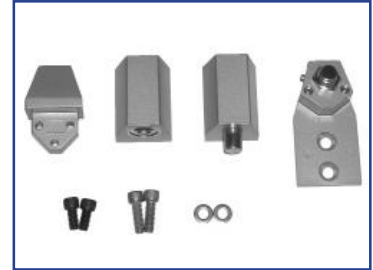
Superseded by US05-1713-01



12-21-001 Plastic Extrusion Track



US21-0531-01 Dome Plug, 1/2",
Heyco



12-15-110 Pivot Kit, Offset, CL



US15-0812-01 Medium Stile
Spacer Kit

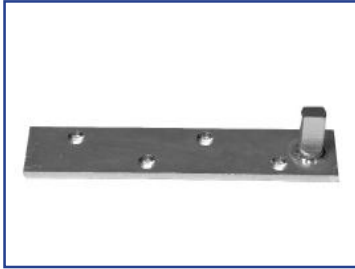


US05-0600-08 Door Stop Kit,
Safety Stop, ICU, BiPart



ICU/CCU Telescopic

ASSA ABLOY, the global leader
in door opening solutions



US05-0566-01 Pivot Base,
Trackless



US15-0744-01 Slide Carriage
Assembly



US05-0598-01 Tensioner
Assembly



1000290 Wheel Stay Assembly



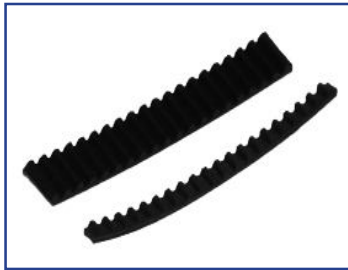
US05-0734-02 Slide Stop
Assembly



US05-0614-01 Belt Anchor
Assembly



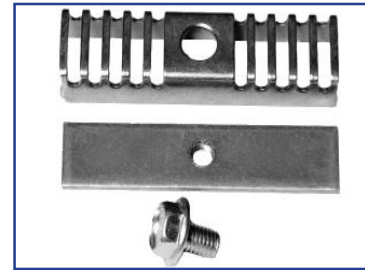
US03-0734-11 Tensioner
Bracket



735351 Tooth Belt, Large



1000062 Tooth Belt, Small



548786-1 Belt Clamp Kit

